

計算數字的百分比

姓名: _____

日期: _____ 分數: _____

$27 \times 80\% = \underline{\hspace{2cm}}$

$11 \times 30\% = \underline{\hspace{2cm}}$

$68 \times 80\% = \underline{\hspace{2cm}}$

$69 \times 70\% = \underline{\hspace{2cm}}$

$8 \times 90\% = \underline{\hspace{2cm}}$

$26 \times 70\% = \underline{\hspace{2cm}}$

$14 \times 50\% = \underline{\hspace{2cm}}$

$34 \times 10\% = \underline{\hspace{2cm}}$

$5 \times 70\% = \underline{\hspace{2cm}}$

$96 \times 70\% = \underline{\hspace{2cm}}$

$52 \times 60\% = \underline{\hspace{2cm}}$

$20 \times 10\% = \underline{\hspace{2cm}}$

$11 \times 90\% = \underline{\hspace{2cm}}$

$50 \times 60\% = \underline{\hspace{2cm}}$

$75 \times 90\% = \underline{\hspace{2cm}}$

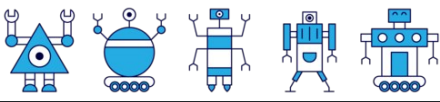
$85 \times 10\% = \underline{\hspace{2cm}}$

$16 \times 10\% = \underline{\hspace{2cm}}$

$32 \times 40\% = \underline{\hspace{2cm}}$

$39 \times 50\% = \underline{\hspace{2cm}}$

$43 \times 80\% = \underline{\hspace{2cm}}$



姓名: _____

日期: _____ 分數: _____

$$27 \times 80\% = 21.6$$

$$11 \times 30\% = 3.3$$

$$68 \times 80\% = 54.4$$

$$69 \times 70\% = 48.3$$

$$8 \times 90\% = 7.2$$

$$26 \times 70\% = 18.2$$

$$14 \times 50\% = 7$$

$$34 \times 10\% = 3.4$$

$$5 \times 70\% = 3.5$$

$$96 \times 70\% = 67.2$$

$$52 \times 60\% = 31.2$$

$$20 \times 10\% = 2$$

$$11 \times 90\% = 9.9$$

$$50 \times 60\% = 30$$

$$75 \times 90\% = 67.5$$

$$85 \times 10\% = 8.5$$

$$16 \times 10\% = 1.6$$

$$32 \times 40\% = 12.8$$

$$39 \times 50\% = 19.5$$

$$43 \times 80\% = 34.4$$