



## 计算小数的百分比

姓名: \_\_\_\_\_

日期: \_\_\_\_\_ 分数: \_\_\_\_\_

$1.33 \times 10\% = \underline{\hspace{2cm}}$

$5.18 \times 90\% = \underline{\hspace{2cm}}$

$0.27 \times 60\% = \underline{\hspace{2cm}}$

$3.17 \times 50\% = \underline{\hspace{2cm}}$

$6.77 \times 60\% = \underline{\hspace{2cm}}$

$1.55 \times 90\% = \underline{\hspace{2cm}}$

$0.66 \times 90\% = \underline{\hspace{2cm}}$

$6.05 \times 80\% = \underline{\hspace{2cm}}$

$3.6 \times 10\% = \underline{\hspace{2cm}}$

$0.69 \times 50\% = \underline{\hspace{2cm}}$

$5.99 \times 40\% = \underline{\hspace{2cm}}$

$3.12 \times 10\% = \underline{\hspace{2cm}}$

$6.38 \times 10\% = \underline{\hspace{2cm}}$

$5.82 \times 40\% = \underline{\hspace{2cm}}$

$3.07 \times 50\% = \underline{\hspace{2cm}}$

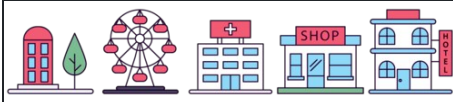
$7.6 \times 90\% = \underline{\hspace{2cm}}$

$8.28 \times 70\% = \underline{\hspace{2cm}}$

$1.26 \times 30\% = \underline{\hspace{2cm}}$

$8.98 \times 10\% = \underline{\hspace{2cm}}$

$5.2 \times 40\% = \underline{\hspace{2cm}}$



姓名: \_\_\_\_\_

日期: \_\_\_\_\_ 分数: \_\_\_\_\_

$1.33 \times 10\% = 0.133$

$5.18 \times 90\% = 4.662$

$0.27 \times 60\% = 0.162$

$3.17 \times 50\% = 1.585$

$6.77 \times 60\% = 4.062$

$1.55 \times 90\% = 1.395$

$0.66 \times 90\% = 0.594$

$6.05 \times 80\% = 4.84$

$3.6 \times 10\% = 0.36$

$0.69 \times 50\% = 0.345$

$5.99 \times 40\% = 2.396$

$3.12 \times 10\% = 0.312$

$6.38 \times 10\% = 0.638$

$5.82 \times 40\% = 2.328$

$3.07 \times 50\% = 1.535$

$7.6 \times 90\% = 6.84$

$8.28 \times 70\% = 5.796$

$1.26 \times 30\% = 0.378$

$8.98 \times 10\% = 0.898$

$5.2 \times 40\% = 2.08$