

Division décimale (2 chiffres)

Nom: _____

Date: _____ Note: _____

$$3 \overline{)7.62}$$

$$8 \overline{)2.06}$$

$$4 \overline{)8.59}$$

$$3 \overline{)6.18}$$

$$4 \overline{)7.98}$$

$$9 \overline{)7.74}$$

$$3 \overline{)5.46}$$

$$8 \overline{)6.13}$$

$$7 \overline{)5.11}$$

$$9 \overline{)6.3}$$

$$8 \overline{)9.28}$$

$$8 \overline{)9.07}$$

$$3 \overline{)1.83}$$

$$5 \overline{)2.15}$$

$$3 \overline{)5.67}$$

$$3 \overline{)4.89}$$

$$8 \overline{)1.66}$$

$$7 \overline{)6.37}$$

$$3 \overline{)3.99}$$

$$5 \overline{)9.68}$$

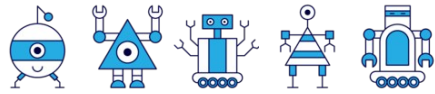
$$9 \overline{)8.01}$$

$$5 \overline{)9.83}$$

$$2 \overline{)8.72}$$

$$4 \overline{)1.69}$$

$$5 \overline{)5.65}$$



Division décimale (2 chiffres)

Nom: _____

Date: _____ Note: _____

$$\begin{array}{r} 2.54 \\ 3 \overline{)7.62} \end{array}$$

$$\begin{array}{r} 0.2575 \\ 8 \overline{)2.06} \end{array}$$

$$\begin{array}{r} 2.1475 \\ 4 \overline{)8.59} \end{array}$$

$$\begin{array}{r} 2.06 \\ 3 \overline{)6.18} \end{array}$$

$$\begin{array}{r} 1.995 \\ 4 \overline{)7.98} \end{array}$$

$$\begin{array}{r} 0.86 \\ 9 \overline{)7.74} \end{array}$$

$$\begin{array}{r} 1.82 \\ 3 \overline{)5.46} \end{array}$$

$$\begin{array}{r} 0.76625 \\ 8 \overline{)6.13} \end{array}$$

$$\begin{array}{r} 0.73 \\ 7 \overline{)5.11} \end{array}$$

$$\begin{array}{r} 0.7 \\ 9 \overline{)6.3} \end{array}$$

$$\begin{array}{r} 1.16 \\ 8 \overline{)9.28} \end{array}$$

$$\begin{array}{r} 1.13375 \\ 8 \overline{)9.07} \end{array}$$

$$\begin{array}{r} 0.61 \\ 3 \overline{)1.83} \end{array}$$

$$\begin{array}{r} 0.43 \\ 5 \overline{)2.15} \end{array}$$

$$\begin{array}{r} 1.89 \\ 3 \overline{)5.67} \end{array}$$

$$\begin{array}{r} 1.63 \\ 3 \overline{)4.89} \end{array}$$

$$\begin{array}{r} 0.2075 \\ 8 \overline{)1.66} \end{array}$$

$$\begin{array}{r} 0.91 \\ 7 \overline{)6.37} \end{array}$$

$$\begin{array}{r} 1.33 \\ 3 \overline{)3.99} \end{array}$$

$$\begin{array}{r} 1.936 \\ 5 \overline{)9.68} \end{array}$$

$$\begin{array}{r} 0.89 \\ 9 \overline{)8.01} \end{array}$$

$$\begin{array}{r} 1.966 \\ 5 \overline{)9.83} \end{array}$$

$$\begin{array}{r} 4.36 \\ 2 \overline{)8.72} \end{array}$$

$$\begin{array}{r} 0.4225 \\ 4 \overline{)1.69} \end{array}$$

$$\begin{array}{r} 1.13 \\ 5 \overline{)5.65} \end{array}$$