

## Convertir fracciones en porcentajes

Nombre: \_\_\_\_\_

Fecha: \_\_\_\_\_ Puntuación: \_\_\_\_\_

$36\% = \underline{\hspace{2cm}}$

$46\% = \underline{\hspace{2cm}}$

$2\% = \underline{\hspace{2cm}}$

$3\% = \underline{\hspace{2cm}}$

$62\% = \underline{\hspace{2cm}}$

$66\% = \underline{\hspace{2cm}}$

$42\% = \underline{\hspace{2cm}}$

$32\% = \underline{\hspace{2cm}}$

$58\% = \underline{\hspace{2cm}}$

$94\% = \underline{\hspace{2cm}}$

$38\% = \underline{\hspace{2cm}}$

$53\% = \underline{\hspace{2cm}}$

$90\% = \underline{\hspace{2cm}}$

$99\% = \underline{\hspace{2cm}}$

$10\% = \underline{\hspace{2cm}}$

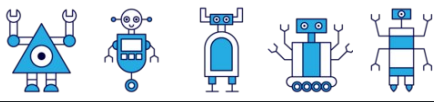
$48\% = \underline{\hspace{2cm}}$

$31\% = \underline{\hspace{2cm}}$

$75\% = \underline{\hspace{2cm}}$

$15\% = \underline{\hspace{2cm}}$

$79\% = \underline{\hspace{2cm}}$



## Convertir fracciones en porcentajes

Nombre: \_\_\_\_\_

Fecha: \_\_\_\_\_ Puntuación: \_\_\_\_\_

$$36\% = \frac{9}{25}$$

$$46\% = \frac{23}{50}$$

$$2\% = \frac{1}{50}$$

$$3\% = \frac{3}{100}$$

$$62\% = \frac{31}{50}$$

$$66\% = \frac{33}{50}$$

$$42\% = \frac{21}{50}$$

$$32\% = \frac{8}{25}$$

$$58\% = \frac{29}{50}$$

$$94\% = \frac{47}{50}$$

$$38\% = \frac{19}{50}$$

$$53\% = \frac{53}{100}$$

$$90\% = \frac{9}{10}$$

$$99\% = \frac{99}{100}$$

$$10\% = \frac{1}{10}$$

$$48\% = \frac{12}{25}$$

$$31\% = \frac{31}{100}$$

$$75\% = \frac{3}{4}$$

$$15\% = \frac{3}{20}$$

$$79\% = \frac{79}{100}$$